



KENOTRON

DESCRIPTION

The GL-8020 is a high-vacuum rectifier that may be used at voltages as high as 40,000 volts peak inverse. This tube is particularly useful in applications which require high voltage and low current.

TECHNICAL INFORMATION

These data are for reference only. For design information refer to specifications.

GENERAL CHARACTERISTICS

Electrical

Filament—Thoriated tungsten	
Voltage	5 volts
Current	5.5–6.5 amperes
Tube voltage drop (at 100 milliamperes)	200 volts
Capacitance, plate-filament	1.4 micromicrofarads

Mechanical

Type of cooling	convection
Over-all dimensions	
Maximum length	8 inches
Maximum diameter	2 $\frac{5}{8}$ inches
Anode cap	medium metal
Base	medium, 4-pin bayonet
Net weight, approx.	3 ounces
Shipping weight, approx.	3 pounds
Mounting position	vertical, base down



Electronic
TUBE

GENERAL  ELECTRIC

TECHNICAL INFORMATION (CONT'D)

MAXIMUM RATINGS AND TYPICAL OPERATING CONDITIONS

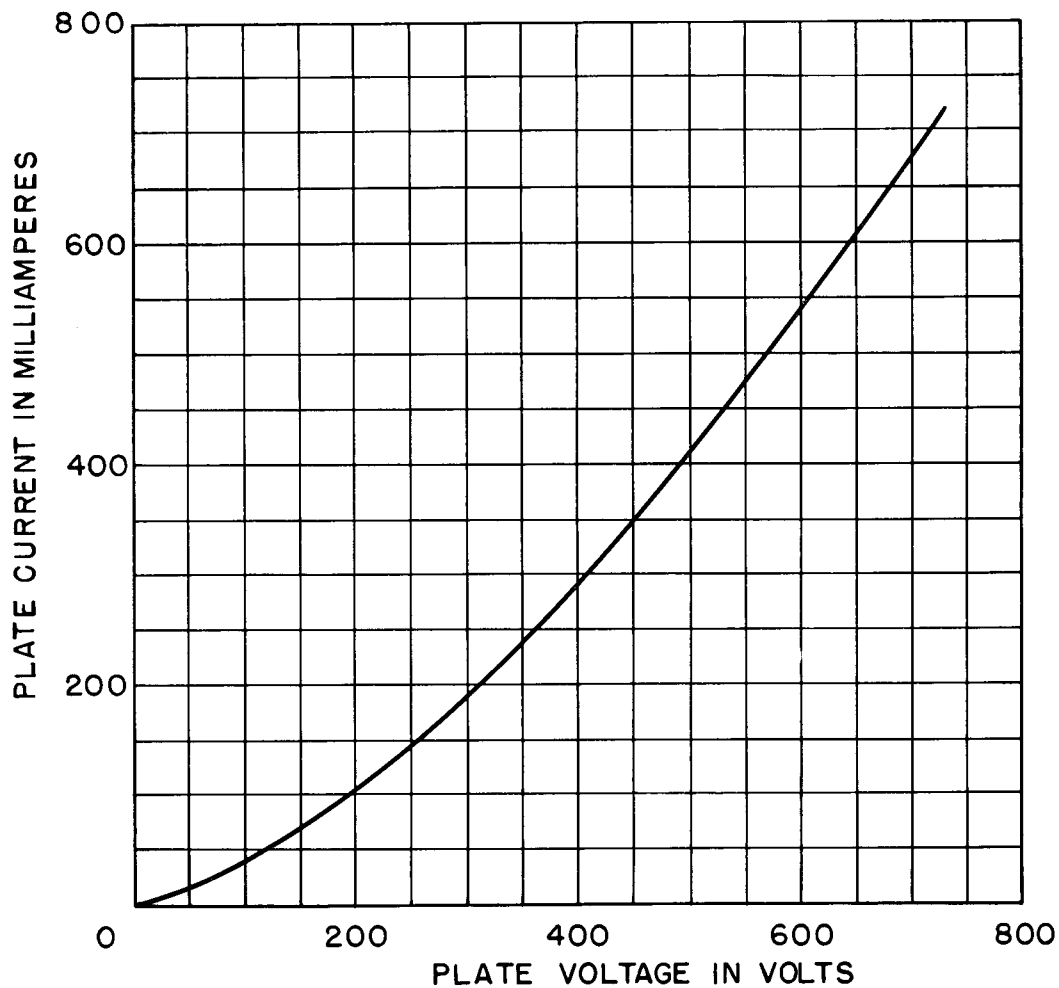
Rectifier operation

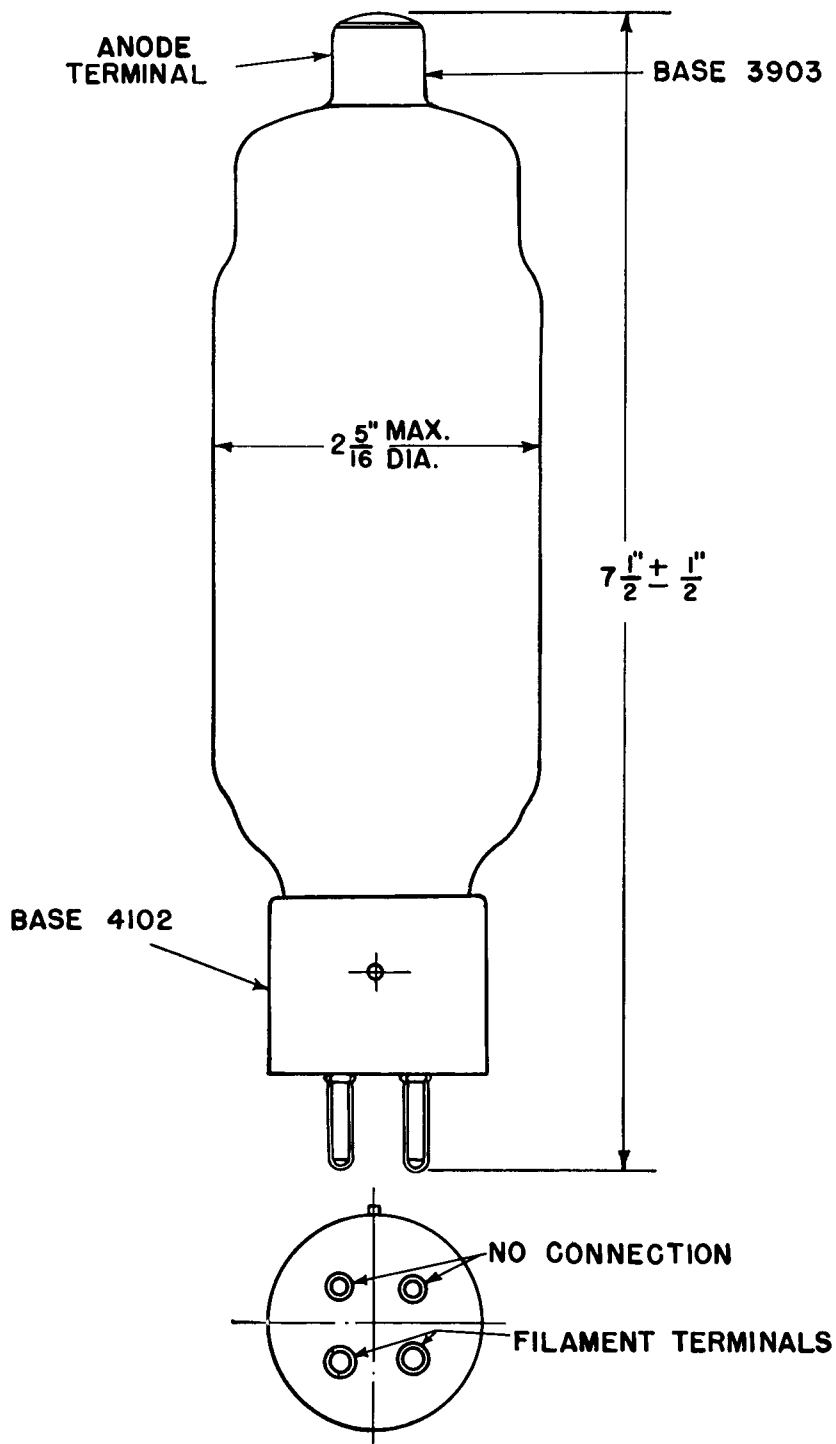
	Typical Operation	Maximum Ratings
Peak inverse voltage.....		40,000 volts
Peak anode current.....		750 milliamperes
Average anode current.....		100 milliamperes

Surge limiting diode operation

Filament voltage.....	5.5	5.8 volts
Peak forward anode voltage.....	10,000	12,500 volts
Peak anode current, minimum.....	2	amperes
Average anode dissipation.....		75 watts

GL-8020
 PLATE CHARACTERISTIC
 $E_f = 5$ VOLTS





K-6979168

9-23-44

OUTLINE
GL-8020 KENOTRON

Electronics Department
GENERAL  ELECTRIC
Schenectady, N. Y.